

RICH CLIENT SUPPORT PROJECT USING HATS TOOLKIT 7.0

This paper intends to show how to create a Rich Client Support application using HATS 7.0 and run the application.

Part-I

How to Create a Rich Client Platform Support Project in HATS Toolkit 7.0

This part covers all the steps necessary to build a rich Client platform support project using HATS Toolkit 7.0 based on default transformation.

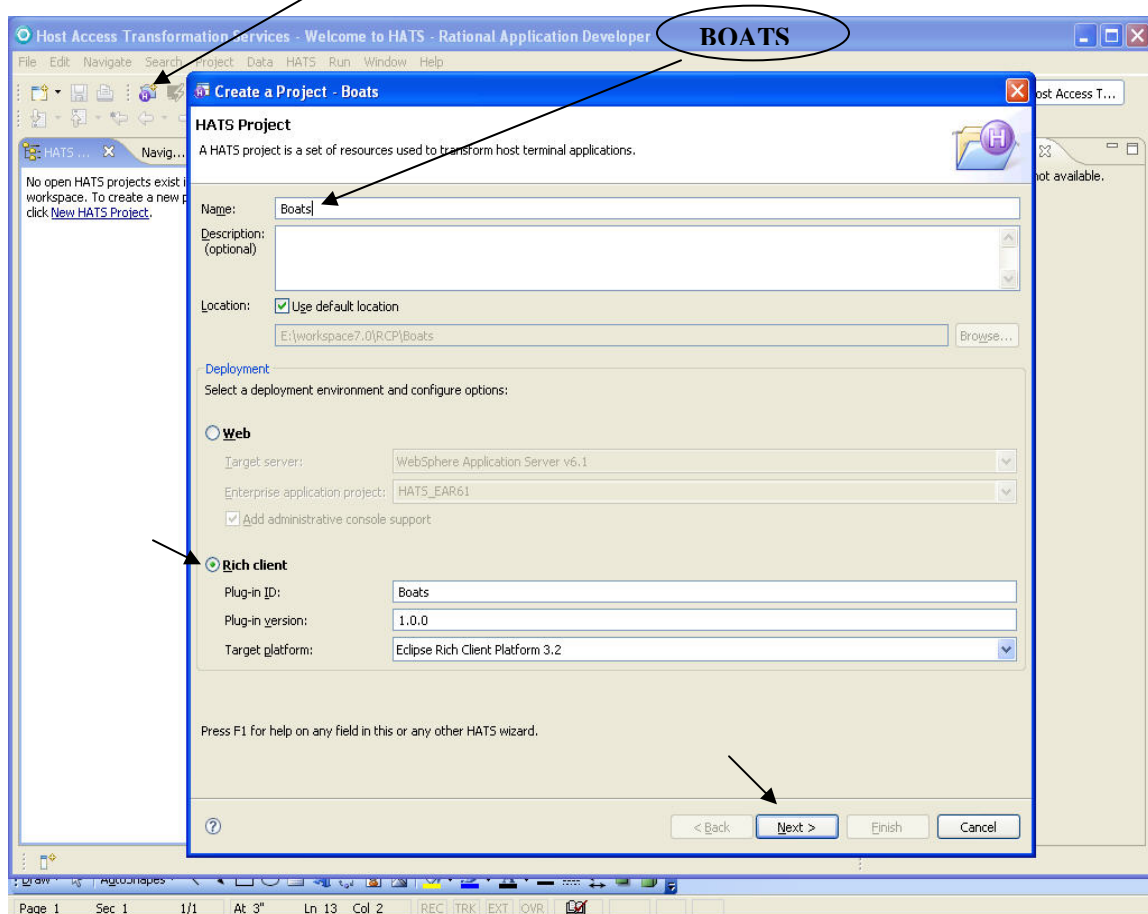
Follow the steps below to build the application.

Step 0. Launching the Studio

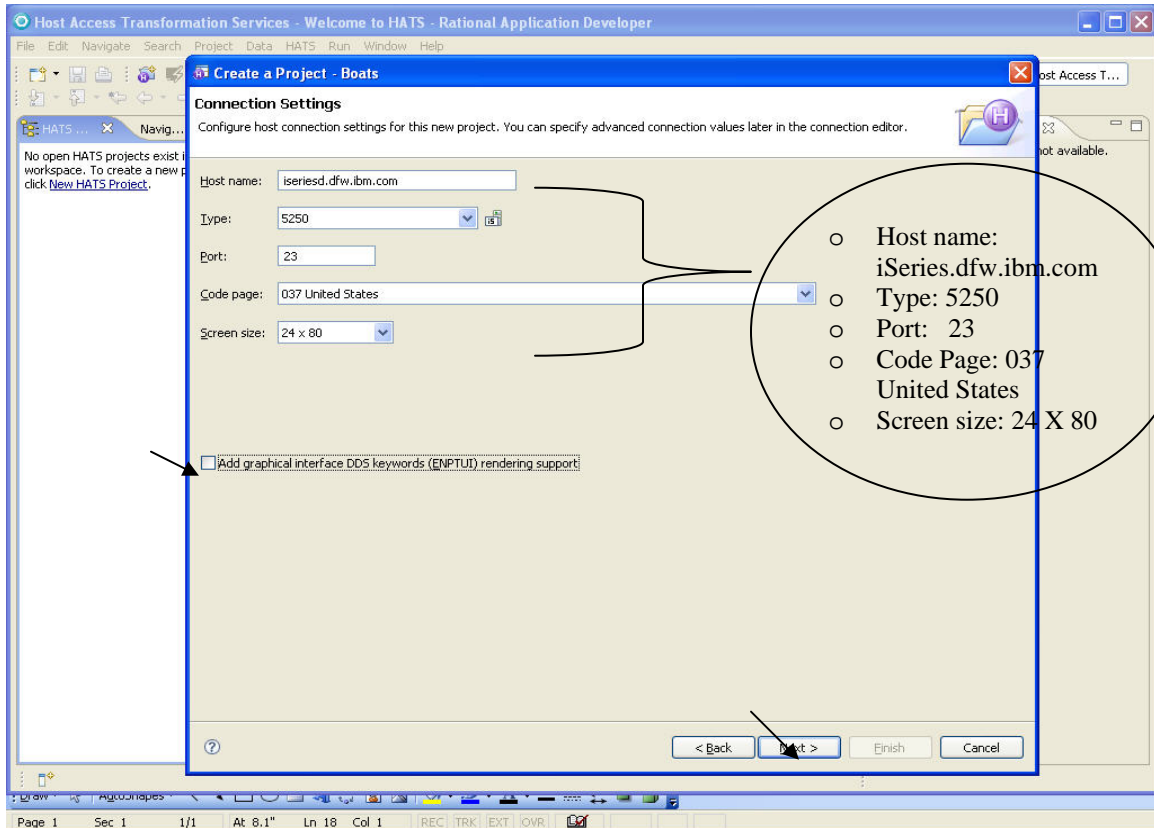
1. Launch the HATS 7.0 Studio: Click **start > All Programs > IBM Software Development Platform > IBM Web Sphere HATS 7.0 > HATS Toolkit 7.0**. Accept the default workspace and then click **OK**.
2. Notice the HATS tips and click **OK**.
3. Click **Help > Software Updates > Manage Configuration**
4. Click **Show disabled features** then Expand **c:\IBM\SDP70** tree.
5. Disable Lotus Expeditor Toolkit if not already found disabled.

Step 1. Creating new Project

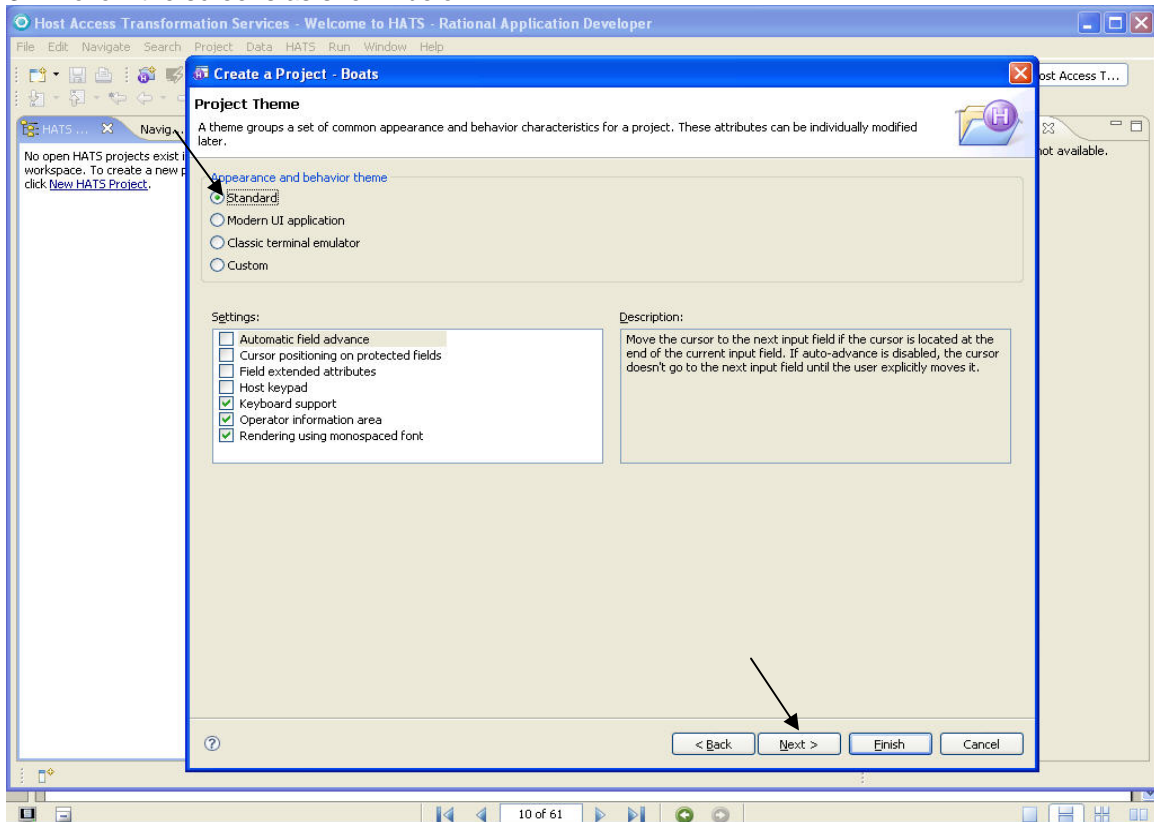
1. Click the **Create HATS Project** icon on the toolbar to start the HATS wizard and fill as shown below.

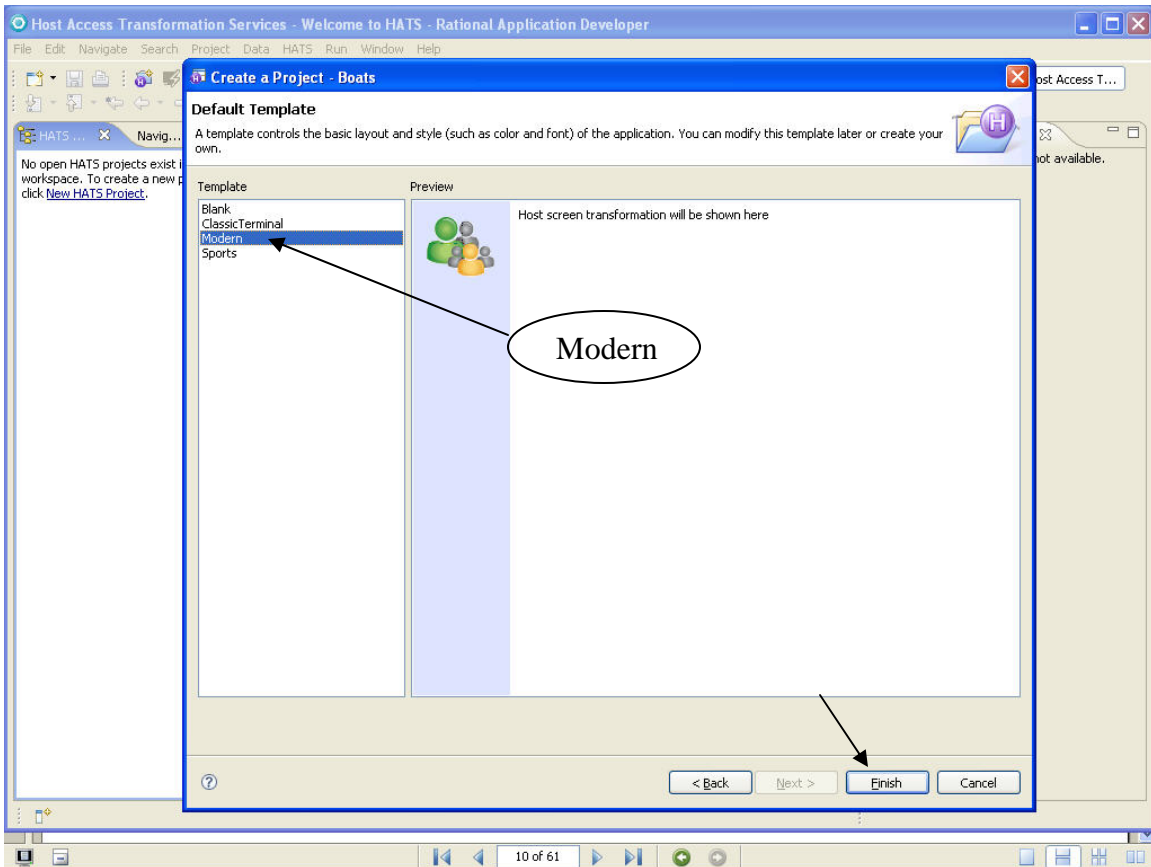


2. Enter the Host name and fill the rest of the columns as shown below.

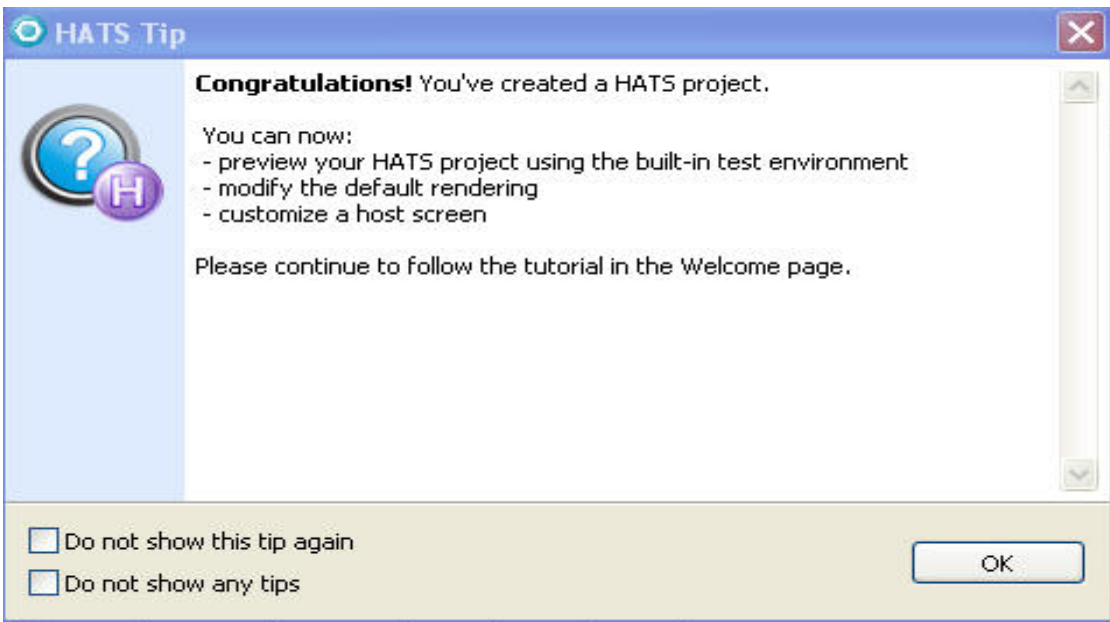


3. Follow the screens as shown below.





You will get Congratulations HATS tip.. Click **OK**.



This concludes the PART-I

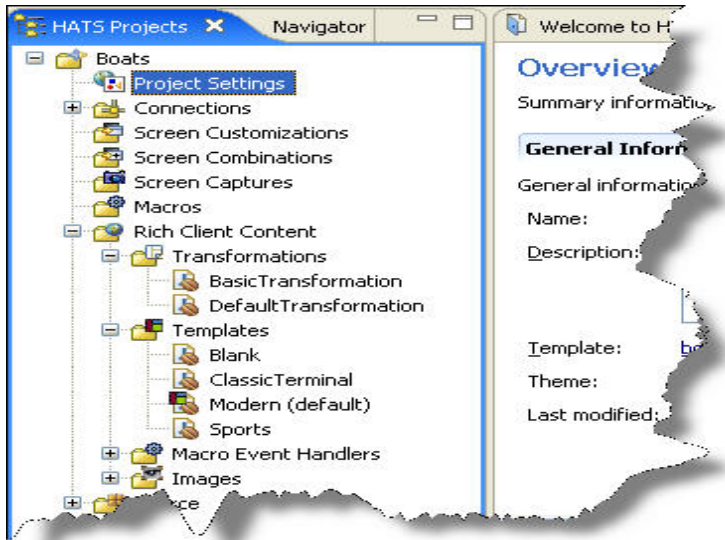
Part-II

How to run Rich Client Platform Support Project in HATS Toolkit 7.0

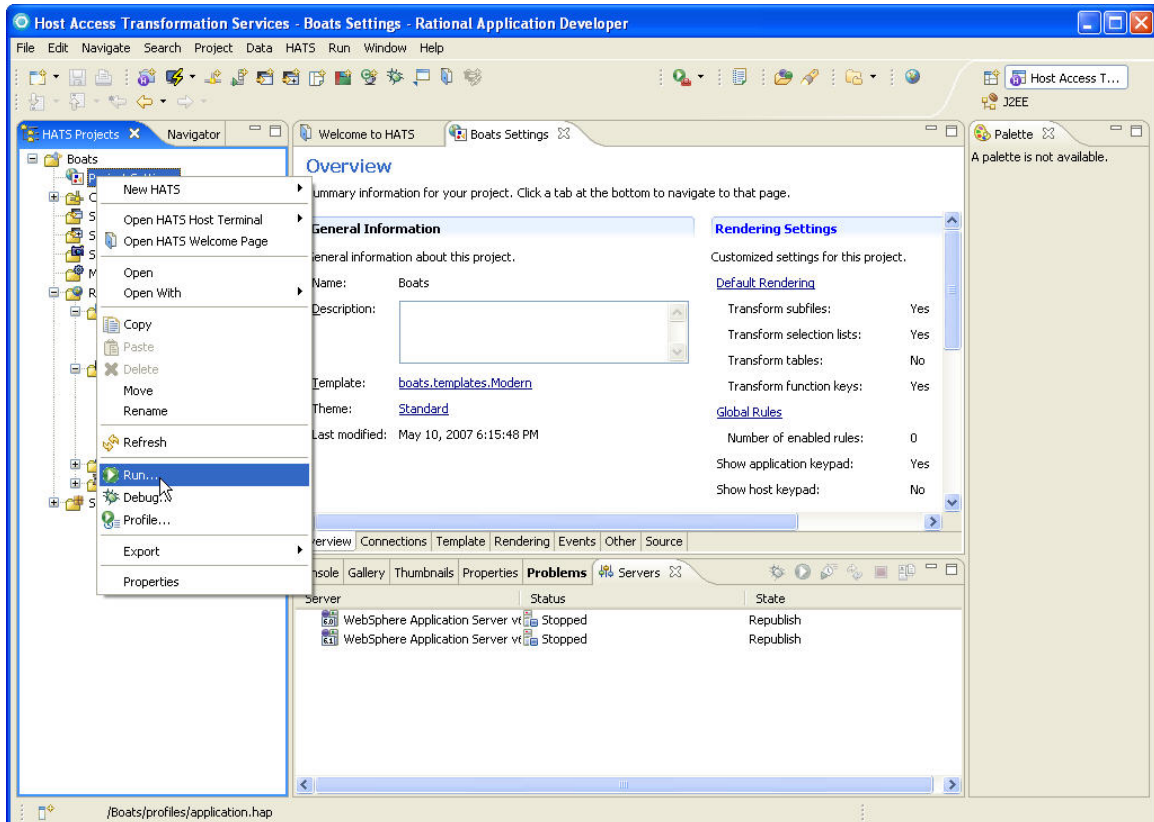
Follow the steps given below to run the application in HATS Toolkit 7.0

Step 1 Run the Application

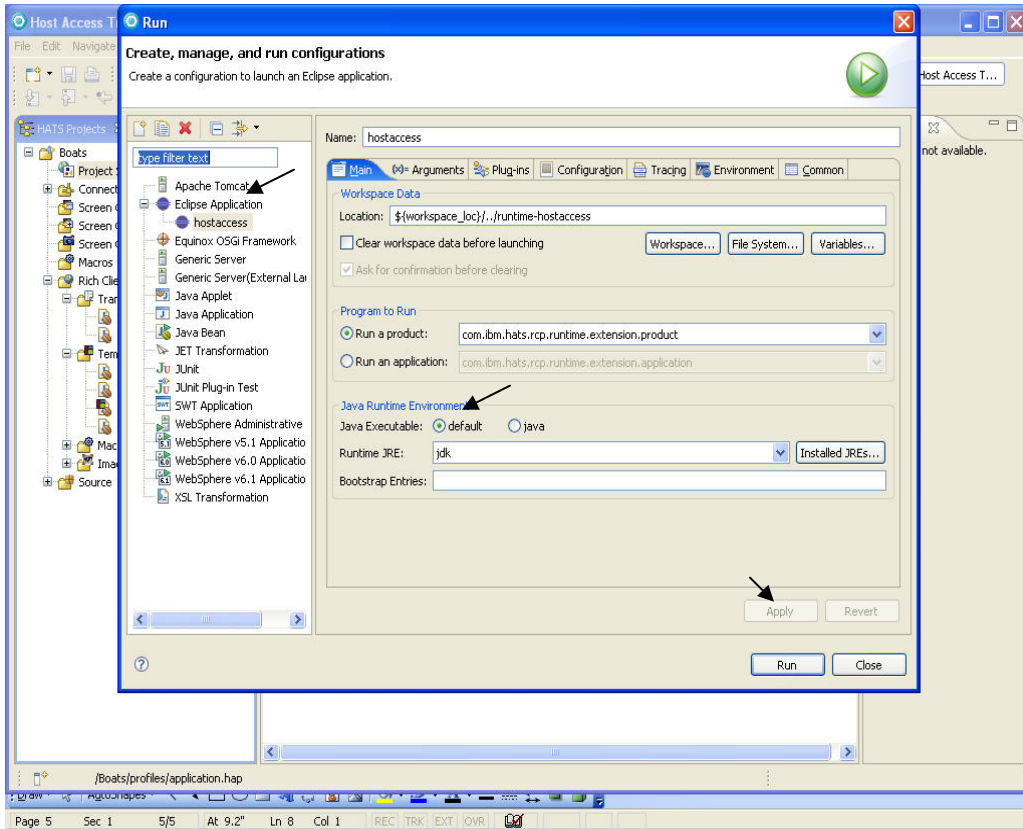
1. Notice the BOATS components under HATS Project on the left side window.



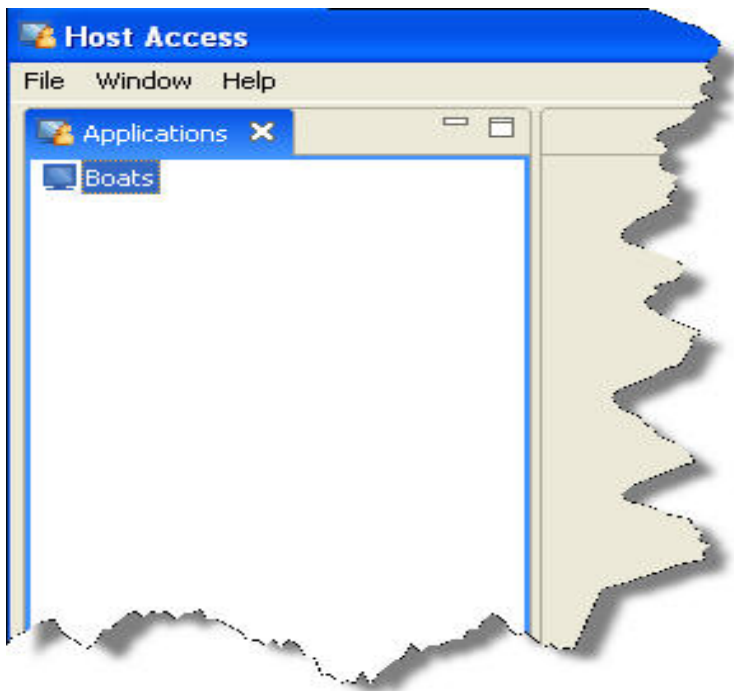
2. Right click on the Project setting and select >Run from the menu



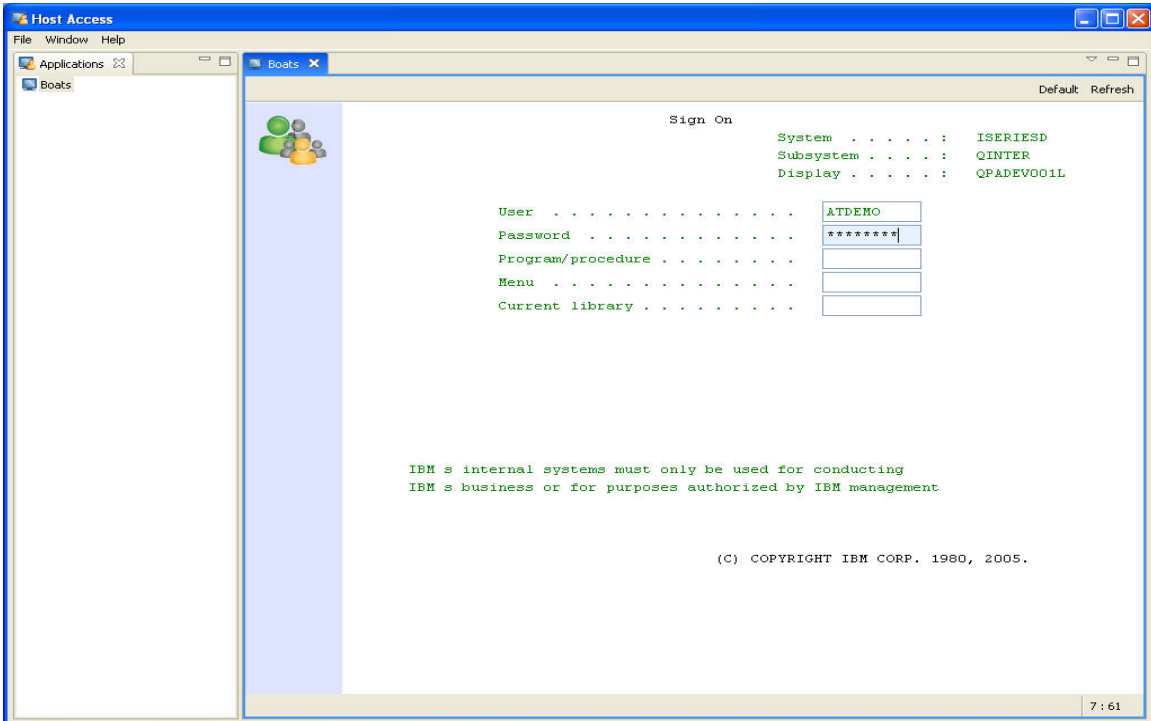
3. Follow the below shown screen,



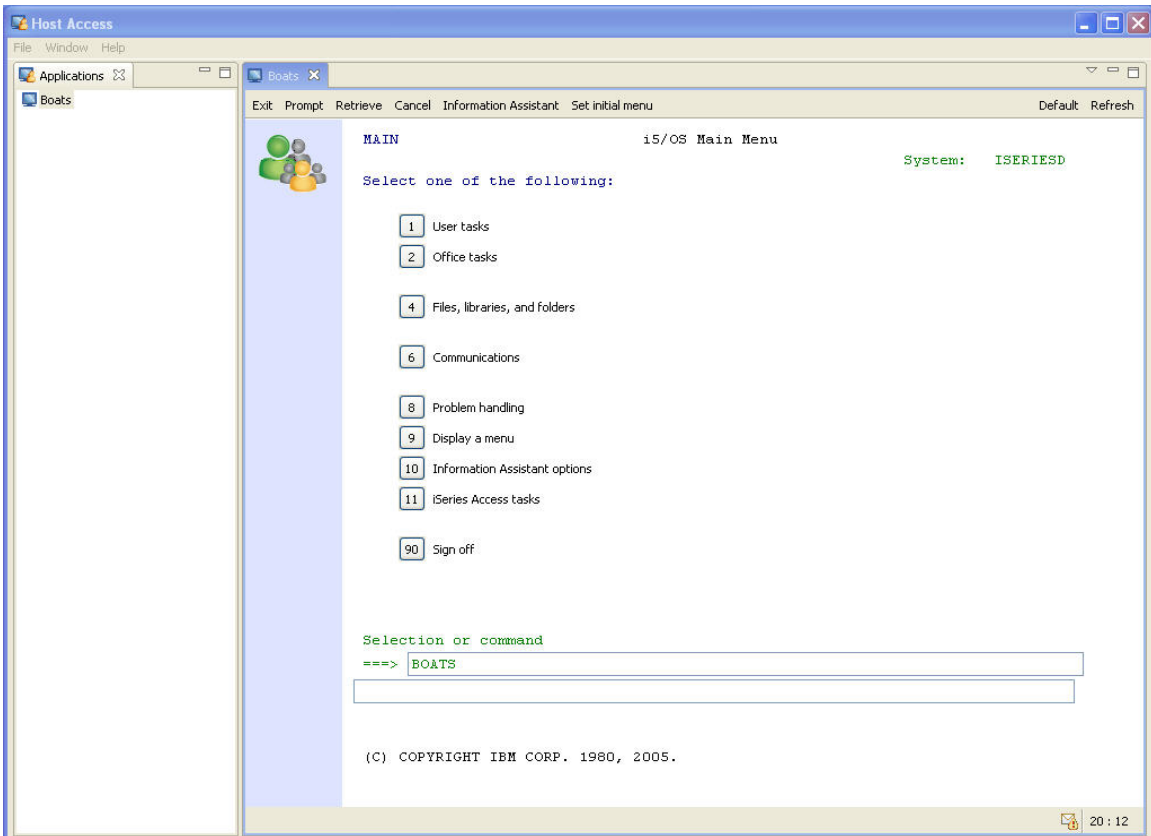
4. Notice Host Access window appears, Click Boats shown at left side window.



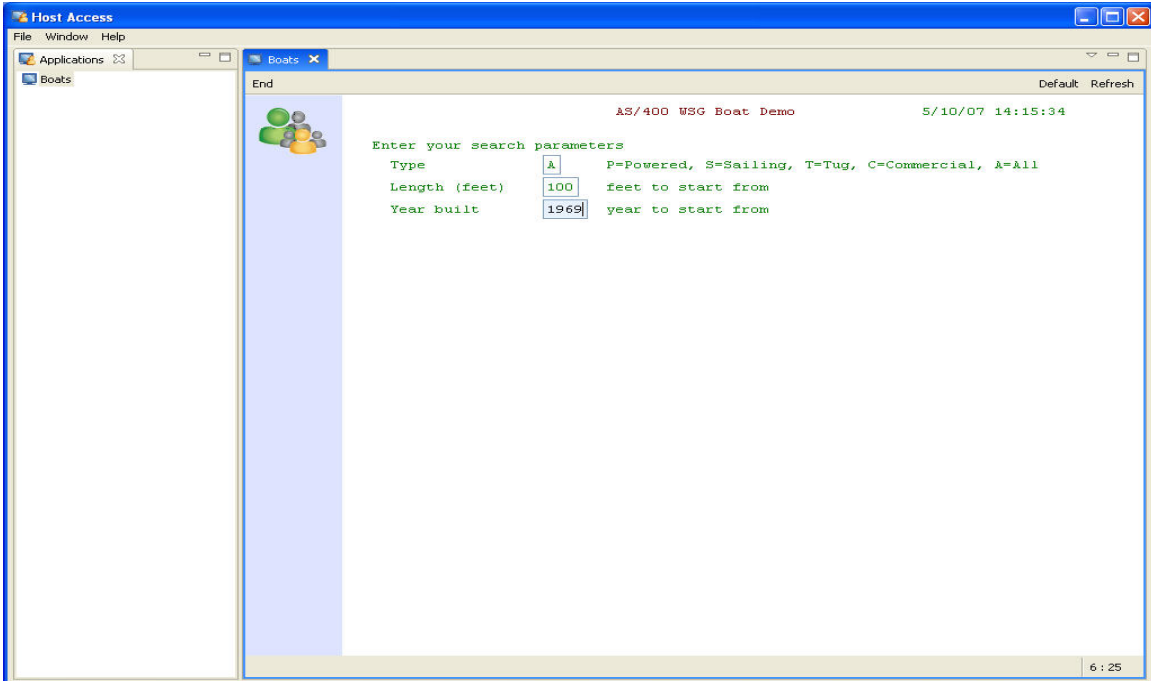
5. Experience the iSeries Sign On screen, Login with **User ATDEMO** & Password **DEMO4YOU** and press **Enter** .



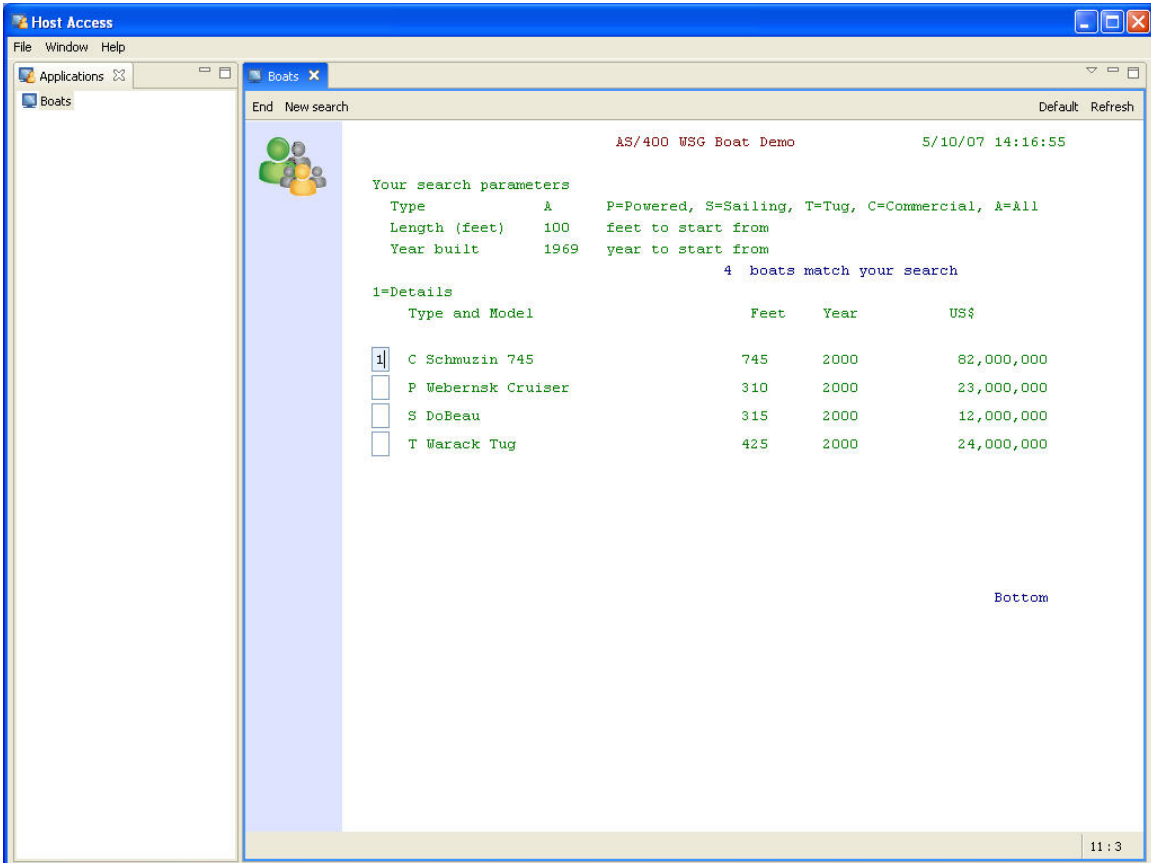
6. After successful login you will see the i5/OS Main Menu screen, type **BOATS** under Selection or Command at bottom of the screen.



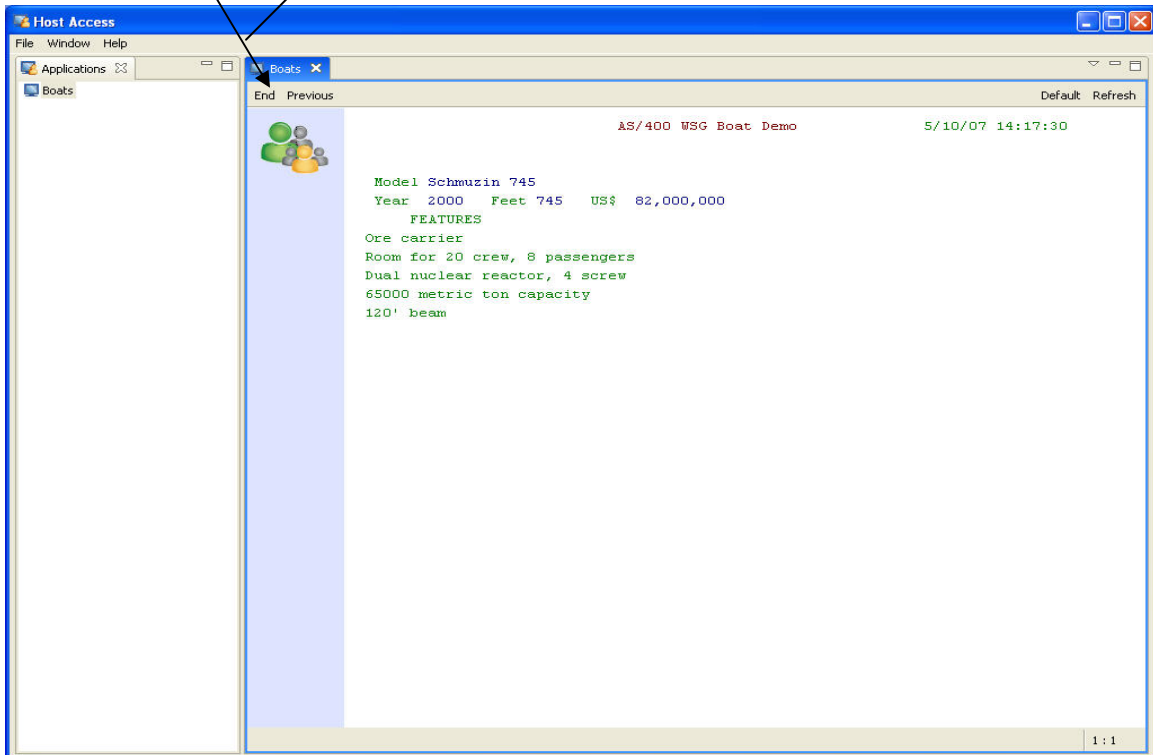
7. You will get the AS/400 WSG Boat Demo screen, Type Length 100 and Year built 1969, as shown



8. Type 1 to get the details of the boats,



9. Notice the End and previous Screen options to return back to Main Menu.



10. Type 90 or Click to Log off from the system and back to Sign On screen again.

