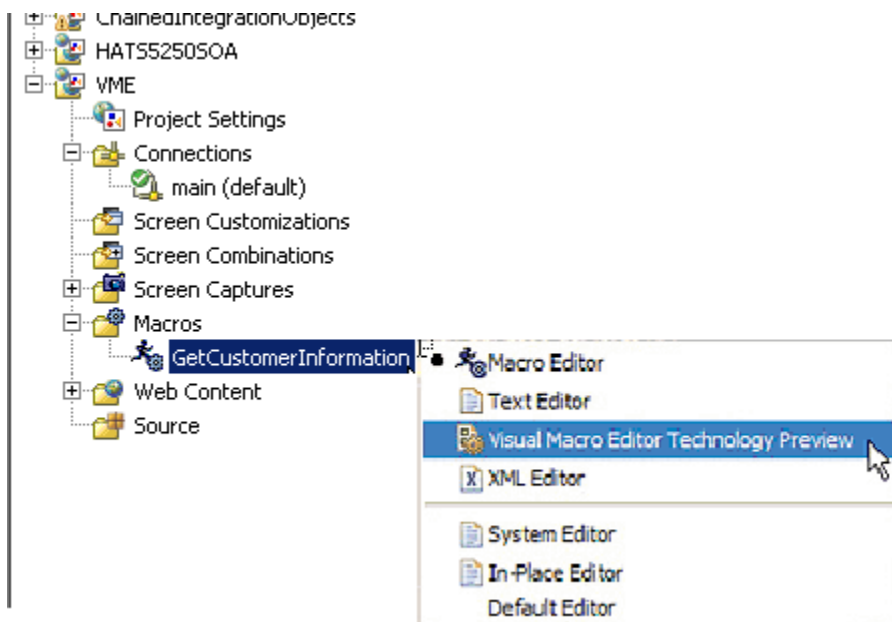


VISUAL MACRO EDITOR: AN INTRODUCTION

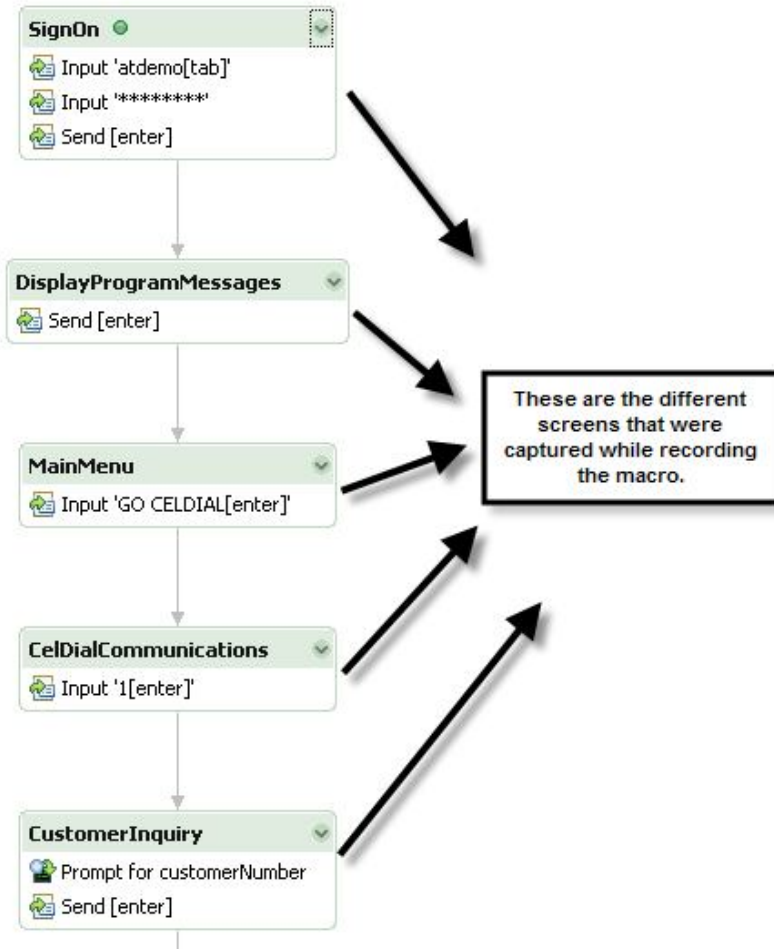
The HATS Visual Macro Editor, or VME, is a graphical tool for creating new macros from scratch or enhancing macros recorded with the HATS Host Terminal. With the VME, you can add new screens, flows, and actions to your macros.

In this document, we edit a previously recorded macro (named **GetCustomerInformation**) with the Visual Macro Editor.

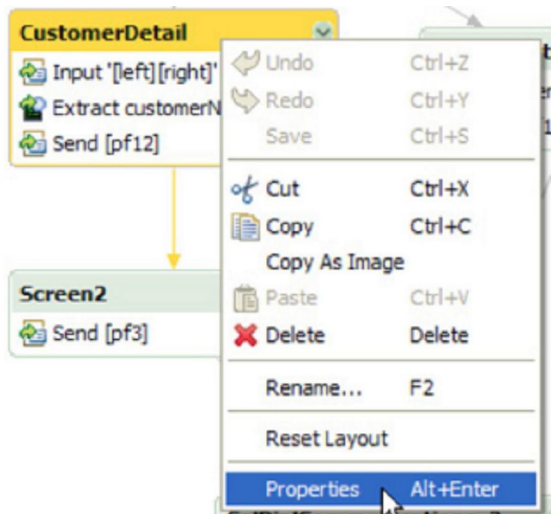


Note: Visual Macro Editor is supplied as a technology preview in HATS 7.1. It appears fully featured in HATS 7.5

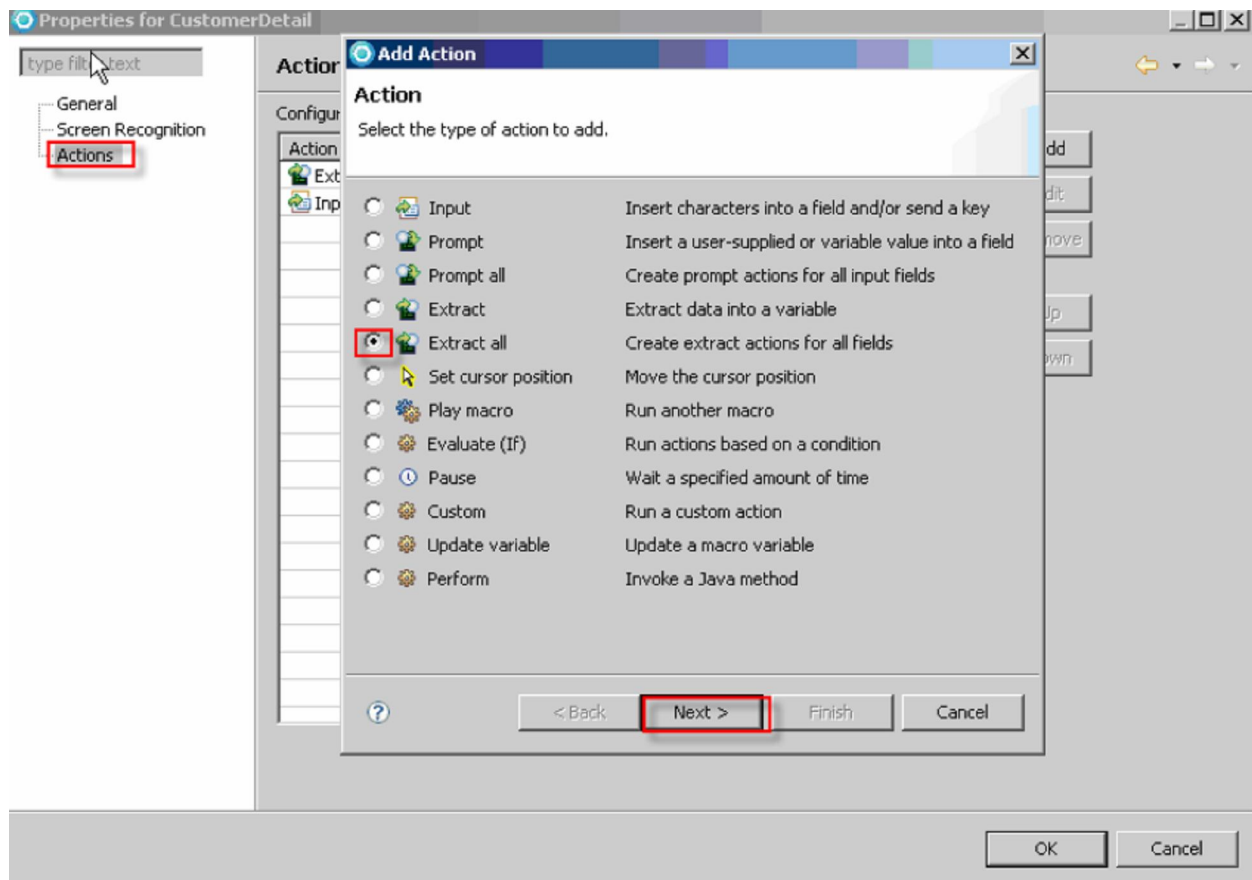
The Visual Macro Editor opens our previously recorded macro:



We can click any screen and edit its properties, for example, screen recognition criteria, actions etc as shown below:



The following window appears after clicking **Properties**:

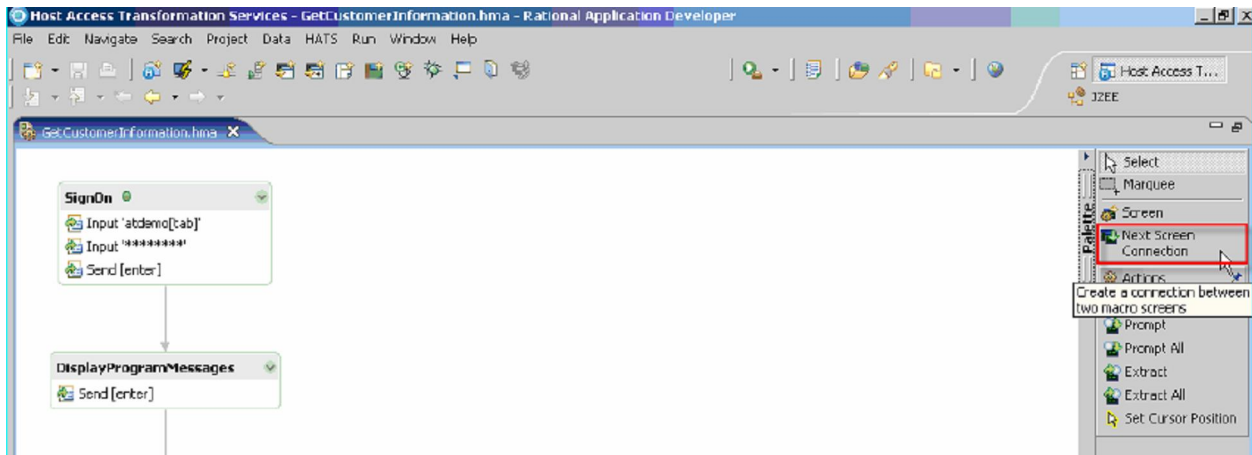


As shown above, we can change/add the screen recognition criteria and add/edit the actions for any screen.

We can also incorporate any screens in our macro that may not have been included in recording the original macro. Thus, we can add for unhandled and exceptional scenarios in our macro by using VME.

Next, we demonstrate how to include an alternative path to our already recorded macro.

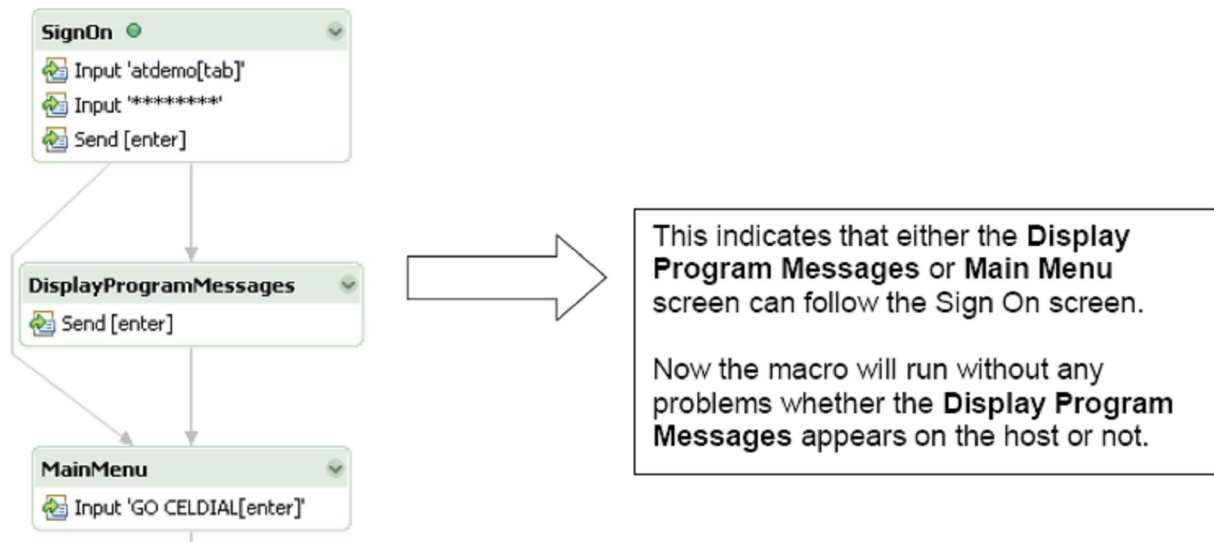
Consider the following diagram:



Our macro works only if the **Display Program Messages** screen appears after the **Sign On** screen. This poses a problem, because this screen does not always appear. Using the Visual Macro Editor, we will learn how to draw a **Next Screen Connection** line between the **Sign On** and **Main Menu** screens. This will enable the macro to work regardless of whether the **Display Program Messages** screen appears or not.

From the Palette view, the **Next Screen Connection** tool is clicked as shown above.

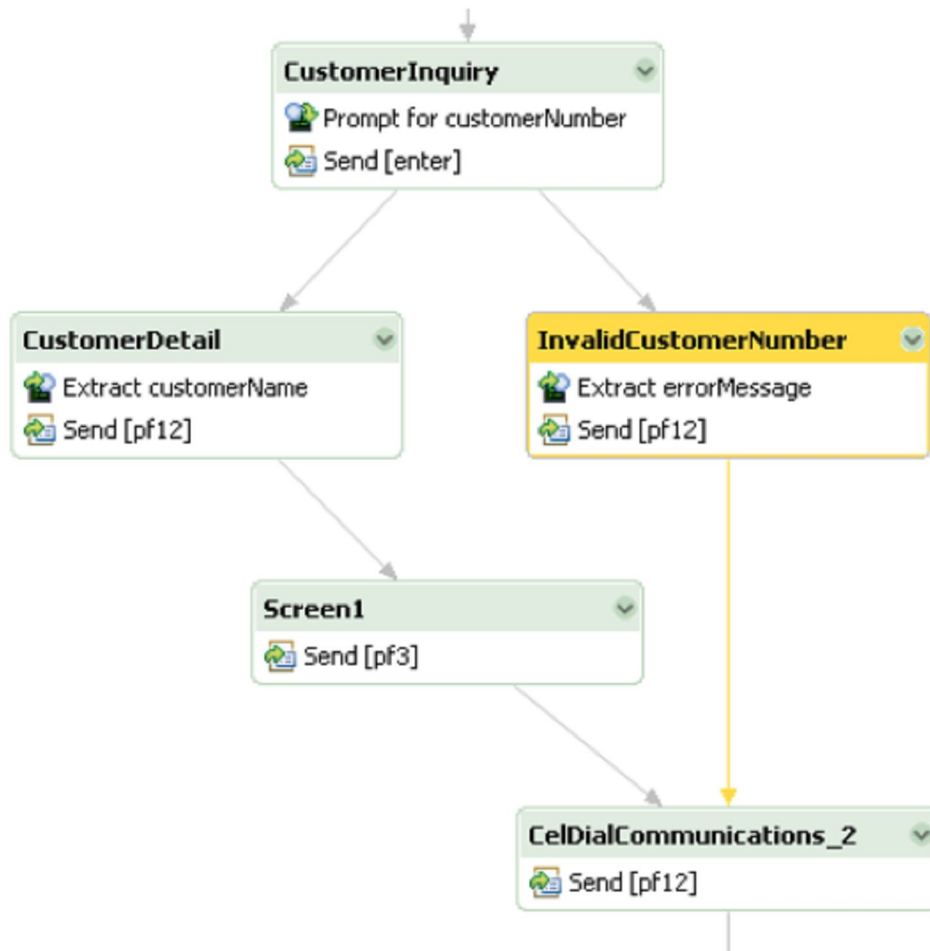
The mouse cursor is moved back to the design area and the **SignOn** screen is clicked. Now the cursor is moved and the **MainMenu** screen is clicked. Notice that a line is drawn between the **SignOn** screen and the **MainMenu** screen, as shown below:



We can also add a new screen to our macro to incorporate exceptions or alternative paths. For this we play the macro and reach our desired new screen and use the Add Screen functionality to add the new screen to our macro:



In our sample macro, we have added a new screen named **InvalidCustomerNumber**. The editor now displays the changes:



This new screen incorporates an error handling capability to our macro that was previously absent. Note that the highlighted screen also displays the actions associated with it: It extracts a string into an **errorMessage** variable and sends the **PF12** command to the host screen.

Reference: IBM InfoCenter

(<http://publib.boulder.ibm.com/infocenter/hatshelp/v71/index.jsp?topic=/com.ibm.hats.doc/doc/javadoc/com.ibm.hats.transform/widgets/package-tree.html>)



© Copyright IBM Corporation 2010
IBM Global Services
Route 100
Somers, NY 10589
U.S.A.
Produced in the United States of America
08-10
All Rights Reserved

IBM, the IBM logo, ibm.com, Lotus®, Rational®, Tivoli®, DB2® and WebSphere® are trademarks or registered trademarks of International Business Machines Corporation in the United States, other countries, or both. If these and other IBM trademarked terms are marked on their first occurrence in this information with a trademark symbol (® or ™), these symbols indicate U.S. registered or common law trademarks owned by IBM at the time this information was published. Such trademarks may also be registered or common law trademarks in other countries. A current list of IBM trademarks is available on the Web at "Copyright and trademark information" at ibm.com/legal/copytrade.shtml Other company, product and service names may be trademarks or service marks of others. The information contained in this documentation is provided for informational purposes only. While efforts were made to verify the completeness and accuracy of the information contained in this documentation, it is provided "as is" without warranty of any kind, express or implied. In addition, this information is based on IBM's current product plans and strategy, which are subject to change by IBM without notice. IBM shall not be responsible for any damages arising out of the use of, or otherwise related to, this documentation or any other documentation. Nothing contained in this documentation is intended to, nor shall have the effect of, creating any warranties or representations from IBM (or its suppliers or licensors), or altering the terms and conditions of the applicable license agreement governing the use of IBM software. This document illustrates how one organization uses IBM products. Many factors have contributed to the results and benefits described; IBM does not guarantee comparable results elsewhere.