

According to IBM, a Subfile is a group of records that have the same record format and are read from and written to a display station in one operation.

As the term suggests, a Subfile is not a file; rather, it is a temporary place to store data of the same format to be used by a display file program.

Subfiles are useful in multiple list multiple items having similar records on a display. An additional beauty of Subfiles is that it can be defined such that the number of records to be displayed fits on one display or exceeds the number of lines available on the display, allowing the user to scroll, or page, through the data. Subfiles also allow an effective means of manipulating data in a database file.

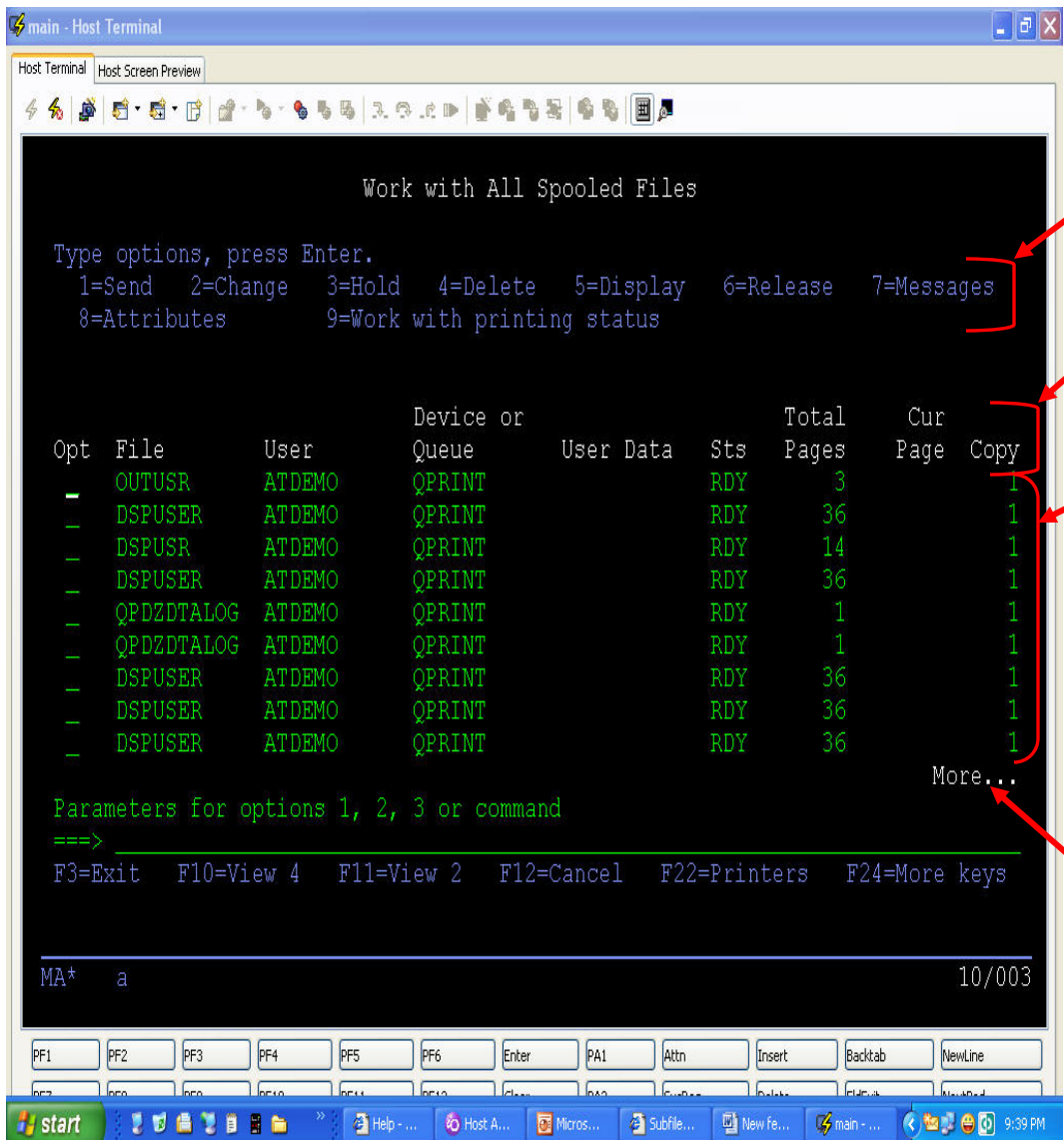
### **How to modify Subfile settings:**

There are three ways to modify the HATs settings;

- at Project Level
- at Rendering Level
- at When manually adding a Subfile in a transformation

In HATS a Subfile is divided into following of four components;

- Action Area
- Header Area
- Data Area
- End Marker



Action Area

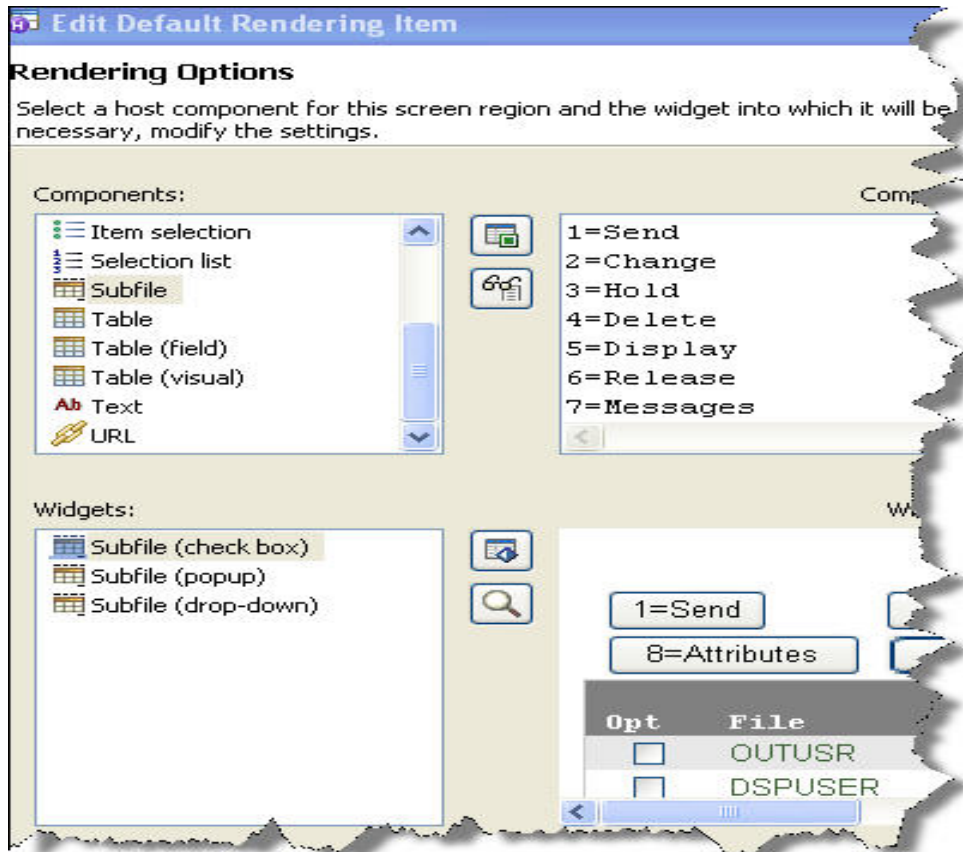
Header Area

Data Area

End Marker

HATS 7.0 includes two new widget features, Choice can be made from the following three widgets options;

- Subfile (check box) *new feature*
- Subfile (Popup) *new feature*
- Subfile (drop-down)



Let's see first two features in some depth;

## Subfile (check box) Widget feature:

This Subfile feature is new to HATS 7.0. Using this feature we can use check boxes in the Action area for making selections. We can change the location of the buttons or links that trigger the actions by setting the '*Action Location*' setting. Options available are **Above and below subfile**, **Above subfile**, and **Below subfile**.

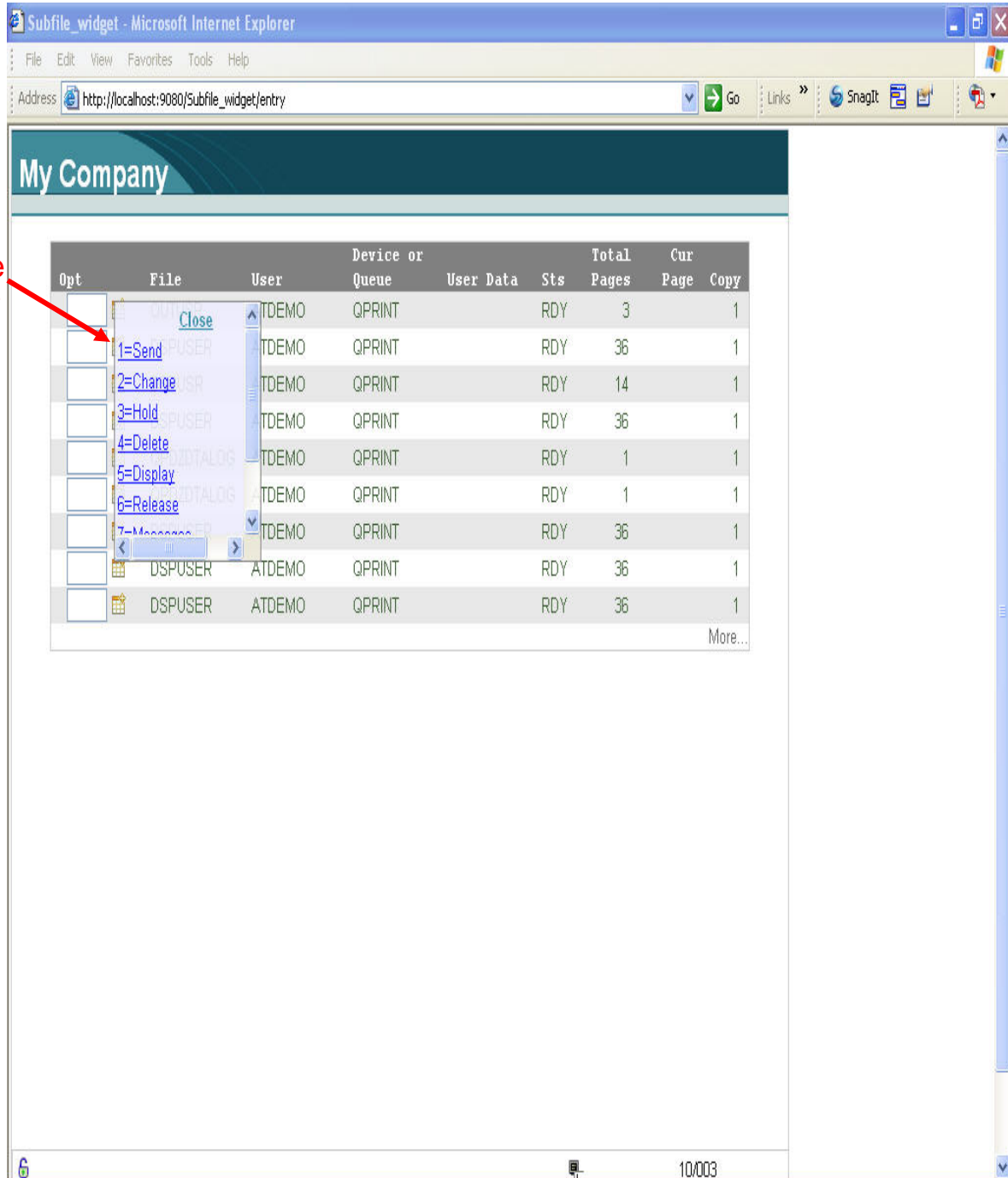
The screenshot shows a software window titled "Preview" with a header "My Company". The main content area displays "Work with All Spooled Files" and "Type options, press Enter." Below this are several buttons: "1=Send", "2=Change", "3=Hold", "4=Delete", "5=Display", "6=Release", "7=Messages", "8=Attributes", and "9=Work with printing status". A red arrow points to the "7=Messages" button with the text "Action Type Can be Button or Link".

Opt	File	User	Device or Queue	User Data	Sts	Total Pages	Cur Page	Copy
<input type="checkbox"/>	OUTUSR	ATDEMO	QPRINT		RDY	3		1
<input type="checkbox"/>	DSPUSER	ATDEMO	QPRINT		RDY	36		1
<input type="checkbox"/>	DSPUSR	ATDEMO	QPRINT		RDY	14		1
<input type="checkbox"/>	DSPUSER	ATDEMO	QPRINT		RDY	36		1
<input type="checkbox"/>	QPDZDTALOG	ATDEMO	QPRINT		RDY	1		1
<input type="checkbox"/>	QPDZDTALOG	ATDEMO	QPRINT		RDY	1		1
<input type="checkbox"/>	DSPUSER	ATDEMO	QPRINT		RDY	36		1
<input type="checkbox"/>	DSPUSER	ATDEMO	QPRINT		RDY	36		1
<input type="checkbox"/>	DSPUSER	ATDEMO	QPRINT		RDY	36		1

Below the table is a section for "Parameters for options 1, 2, 3 or command" with a text input field and several function key shortcuts: "F3=Exit", "F10=View 4", "F11=View 2", "F12=Cancel", "F22=Printers", and "F24=More keys". At the bottom are buttons for "Reset", "Default", "Refresh", "Disconnect", and "Turn Keyboard Off". A red arrow points to the "Opt" column of the table with the text "Check Box Action area".

## Subfile (popup) Widget feature:

This Subfile feature is also new to HATS 7.0. In this feature the Subfile action area selection is available in a Pop-up menu style.



The screenshot shows a web browser window titled "Subfile\_widget - Microsoft Internet Explorer". The address bar shows "http://localhost:9080/Subfile\_widget/entry". The page content includes a header "My Company" and a table with columns: Opt, File, User, Device or Queue, User Data, Sts, Total Pages, Cur Page, and Copy. A popup menu is open over the first row of the table, listing actions: Close, 1=Send, 2=Change, 3=Hold, 4=Delete, 5=Display, 6=Release, and 7=Message. A red arrow points to the popup menu with the text "Caption type Actions available".

Opt	File	User	Device or Queue	User Data	Sts	Total Pages	Cur Page	Copy
					RDY	3		1
					RDY	36		1
					RDY	14		1
					RDY	36		1
					RDY	1		1
					RDY	1		1
					RDY	36		1
	DSPUSER	ATDEMO	QPRINT		RDY	36		1
	DSPUSER	ATDEMO	QPRINT		RDY	36		1



© Copyright IBM Corporation 2010  
IBM Global Services  
Route 100  
Somers, NY 10589  
U.S.A.  
Produced in the United States of America  
08-10  
All Rights Reserved

IBM, the IBM logo, [ibm.com](http://ibm.com), Lotus®, Rational®, Tivoli®, DB2® and WebSphere® are trademarks or registered trademarks of International Business Machines Corporation in the United States, other countries, or both. If these and other IBM trademarked terms are marked on their first occurrence in this information with a trademark symbol (® or ™), these symbols indicate U.S. registered or common law trademarks owned by IBM at the time this information was published. Such trademarks may also be registered or common law trademarks in other countries. A current list of IBM trademarks is available on the Web at "Copyright and trademark information" at [ibm.com/legal/copytrade.shtml](http://ibm.com/legal/copytrade.shtml) Other company, product and service names may be trademarks or service marks of others. The information contained in this documentation is provided for informational purposes only. While efforts were made to verify the completeness and accuracy of the information contained in this documentation, it is provided "as is" without warranty of any kind, express or implied. In addition, this information is based on IBM's current product plans and strategy, which are subject to change by IBM without notice. IBM shall not be responsible for any damages arising out of the use of, or otherwise related to, this documentation or any other documentation. Nothing contained in this documentation is intended to, nor shall have the effect of, creating any warranties or representations from IBM (or its suppliers or licensors), or altering the terms and conditions of the applicable license agreement governing the use of IBM software. This document illustrates how one organization uses IBM products. Many factors have contributed to the results and benefits described; IBM does not guarantee comparable results elsewhere.