

### » Company Background

Crown Equipment Corporation has earned a reputation for exceptional product design, engineering and manufacturing of its award-winning line of electric lift trucks. From our smallest hand pallet truck to our highest lifting turret truck, our goal is to always provide the user with the safest, most efficient and ergonomic truck possible to lower your total cost of ownership and increase your uptime.

Crown supports customers with a wide selection of **electric lift trucks** ranging from hand pallet trucks to very narrow-aisle (VNA) turret trucks and **engine powered lift trucks**. A strong and extensive **global dealer network** provides you with a wide variety of quality material handling products, storage solutions and support services. Our dedicated team of professionals will always put you first.

### » Solution (IBM Rational HATS)

- ➔ Migrated their existing HATS 6.1 version to latest version HATS 7.5.
- ➔ Royal Cyber helped Crown in solving all the major defects which made the system to use more efficiently.
- ➔ Implemented new features like different screen data in drop down for better navigation and usability.
- ➔ Implemented the new feature of cursor automatically moving to the next line without pressing the Tab button.

### » Business Needs

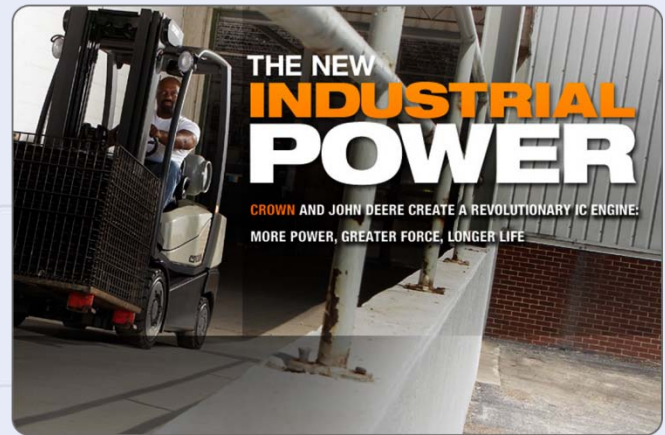
- ➔ To provide convenient, cost-effective service and parts management via true Internet Base Business-2-Business platform while using the existing Legacy Order Management Application.
- ➔ Rapidly improve the usability, accessibility and serviceability of the existing legacy application through enterprise application modernization tools/methods.

### » Business Problem Case

- ➔ To migrate their existing HATS version 6.1 to the latest version HATS 7.5 to leverage the benefits of the new features.
- ➔ To implement new features for better navigation for their customers.
- ➔ To fix all their exiting defects which could help their customers to access the system with ease and improve the business.
- ➔ To Implement features like combining data from different screens and populate as drop downs which will make the navigation easier for their customers.

### » Business Benefits

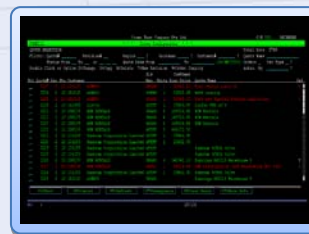
- ➔ Increased ROI by eliminating Migration Efforts.
- ➔ Highly Modernized & Rich Look and Feel has promoted user engagement.
- ➔ User friendly Menu Macros has saved lot of screen navigation time.
- ➔ Applications would act as Evolutionary Prototypes for future migrations.
- ➔ Achieving the highest level of interoperability among applications.



### » Key Technologies and Tools used

- ➔ Rational Host Access Transformation Services.
- ➔ Rational Application Developer.
- ➔ Cascading Style Sheets
- ➔ Java, JavaScript, HTML, CVS

### » Master Tab Mainframe Screens



### » Master Tab Web-Based Screens

